



# IOT TECHNOLOGY APPLICATIONS FOR CONSTRUCTION INDUSTRY

- PROMOTE ADVANCED LEVEL OF WORKERS' SAFETY & LOCATION TRACKING
- ENHANCE MANPOWER & ASSET/EQUIPMENT MANAGEMENT
- IMPROVE SECURITY, AVIOD INTRUSION & UNAUTHORIZED ACCESS
- MONITOR RISK OF ACCIDENTAL FIRE



## BENEFITS

- Workers' Safety
  - Track real-time location of workers on the construction site.
  - Alert when a fall is detected or the help button is pressed. Also, if a worker remains in the same location for a long time.
- Manpower, Asset & Equipment Management
  - Know their whereabouts. Dispatch workers, make use of assets and equipment more efficiently.
- Security and Access Control
  - Record workers entering/leaving a predefined zone.
  - Avoid unauthorized access.
  - Avoid intrusion by strangers
- Monitor Risk of Accidental Fire
  - Connect to various types of sensors, including smoke detectors to prevent accidental fires.
- More...Let's talk!



## FEATURES

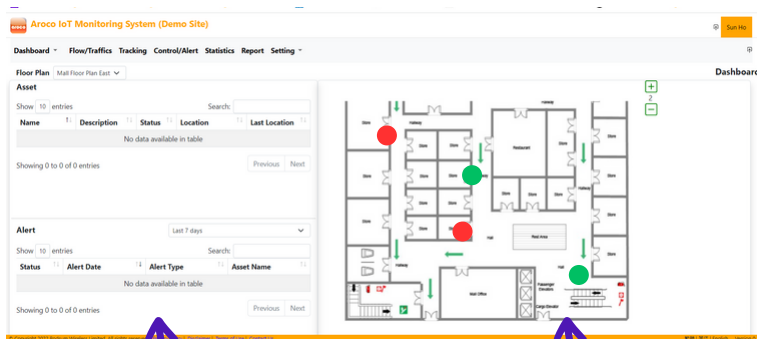
- Increase level of security, personal safety and operation management in construction sites through wireless connectivity.
- Protect workers in workplace
- Locate and monitor workers, contractors, assets/ equipment and environment on your PC/Tablet, using various wireless sensors. Real-time information/status shown. Single platform for all sensor data.
- Suitable for use in most locations e.g. underground, tunnel, wherever WiFi coverage is available.
- Low cost. Please contact us.

**CONTACT US :**  
[www.rodsum.com](http://www.rodsum.com) | [sales@rodsum.com](mailto:sales@rodsum.com)





## DASHBOARD



Construction Site Monitoring Status

Your Uploaded Floor Plan (Multiples)

## 😊 EASY TO USE

After logging in to the online system, just clicking on the sensor spots for details you need anytime anywhere, even at home in the midnight! No on-site services by any technicians or professional knowledge required. Simply place the selected sensors in the appropriate spots, you are good to go!

**CONTACT US :**  
[www.rodsum.com](http://www.rodsum.com) | [sales@rodsum.com](mailto:sales@rodsum.com)





# Workers' / Visitors' Safety & Location Tracking System



Option for enabling helmet with tracking capability available

## Protect Workers in Workplace



### Track real-time location of the workers

In case of help seeking triggered, know his/her whereabouts immediately. May ask for quick supports from nearby workers without delay.



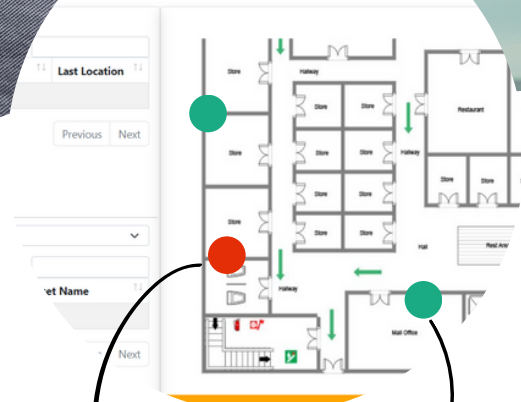
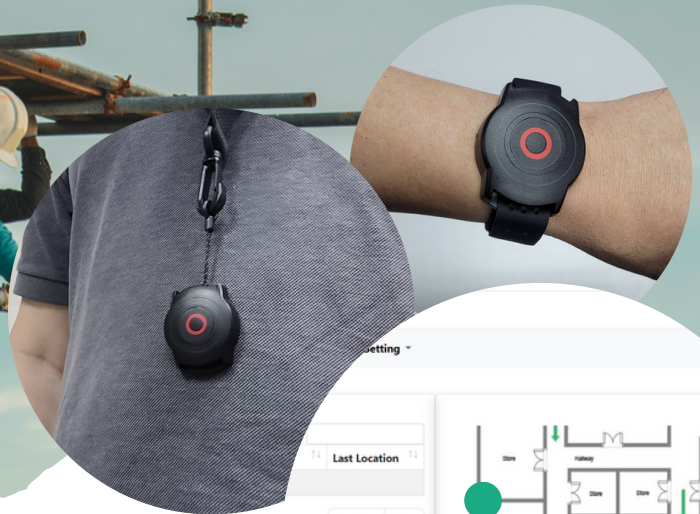
### Fall detection, help button & time monitoring available for personal safety

Built-in fall sensor to detect and report falls automatically. A help button is also available for use anytime in need. Staying same location for long time could trigger a help alert for additional protection.



### Compact design of personal tracking device

Making it good to be a wristband or a pendant subject to needs. Extra long battery life.



Attention required

Normal

**CONTACT US**



[sales@rodsum.com](mailto:sales@rodsum.com)



[www.rodsum.com](http://www.rodsum.com)





## Construction Equipment/Assets Tracking System



AROCO AC-BLE-T110/G  
Wireless Beacon without/with  
Vibration Detection

***Locate the equipment/assets  
whenever you need them***



### Enhance Resource Management

Locate on desktop computer or through mobile app on smartphone. Access equipment/assets more efficiently, avoid disturbing your work flow or schedule.



### Improve Productivity. Increase ROI

By reducing the time spent searching for equipment, you can minimize idle time and potentially require fewer pieces of equipment overall.



### Preventive Measure for Loss of Asset/Equipment

Receive alerts when they are being removed from assigned zone areas.



**CONTACT US**



[sales@rodsum.com](mailto:sales@rodsum.com)



[www.rodsum.com](http://www.rodsum.com)